

# MARINA BAY

THE SIGNATURE

REEF ISLAND · KINGDOM OF BAHRAIN

A PRIVATE RELEASE

Ten residences on Reef Island, where marina life,  
private pools and an open horizon meet.

---

THE ADDRESS

# A rare Reef Island address, with only ten residences in the signature.

The signature marina-front on Reef Island — five floors of generous duplexes, select sea-view residences and penthouse living, finished to a luxury specification.

---

FIVE FLOORS · MARINA-FRONT · LUXURY FINISHING



BUILDING 6 AT A GLANCE

10

LIMITED RELEASE

2,984

SQM SALEABLE

5

MARINA FLOORS

BD 4.48M

COLLECTION VALUE

*A compact release keeps the choice simple — apartment, premium 2BR, pool duplex, large duplex, or penthouse.*

01

THE COLLECTION



THE COLLECTION

## Ten residences, five formats.

### 2BR Apartments

MB2 · MB4 · MB5

185 sqm

*from BD 2,729 monthly*

### Premium 2BR

MB7

185 sqm

*sea-view position*

### Pool Duplexes

MB1 · MB3

407 sqm

*private pool format*

### Large Pool Duplexes

MB6 · MB8

415 sqm

*villa + sea aspect*

### Penthouses

MB9 · MB10

300 sqm

*fifth floor, with pool*



THE LIFE

# Pools of your own. Views that never close.

Duplexes and penthouses carry private pools, while the premium upper floors keep the sea in view. A release this small keeps every residence rare.

02

---

OWNERSHIP



THE ASK SIGNATURE PATH

# Ownership on a monthly rhythm.

THE COLLECTION

BD **4,481,000**

Ten residences, valued as one private collection on the ASK Signature reference.

**10%**

ON SIGNATURE

**1% x 90**

MONTHS TO OWN

---

A tenth on signature, the balance spread evenly across ninety months — staged ownership with monthly comfort.

## Ten percent down. Ninety months. Every residence.

UNIT	RESIDENCE	FLOOR	SIZE	PRICE	10% DOWN	MONTHLY
MB 1	Duplex Pool	1st & 2nd	407 sqm	BD 590,150	BD 59,015	BD 5,902
MB 2	2BR Apartment	1st	185 sqm	BD 272,875	BD 27,288	BD 2,729
MB 3	Duplex Pool	1st & 2nd	407 sqm	BD 590,150	BD 59,015	BD 5,902
MB 4	2BR Apartment	2nd	185 sqm	BD 272,875	BD 27,288	BD 2,729
MB 5	2BR Apartment	3rd	185 sqm	BD 272,875	BD 27,288	BD 2,729

*Monthly equals 90% of the ASK price over 90 months — approximately 1% of the total.*

## The upper residences, on the same simple rhythm.

UNIT	RESIDENCE	FLOOR	SIZE	PRICE	10% DOWN	MONTHLY
MB 6	Duplex Pool	3rd & 4th	415 sqm	BD 601,750	BD 60,175	BD 6,018
MB 7	Premium 2BR	4th	185 sqm	BD 276,575	BD 27,658	BD 2,766
MB 8	Duplex Pool	3rd & 4th	415 sqm	BD 601,750	BD 60,175	BD 6,018
MB 9	Penthouse	5th	300 sqm	BD 501,000	BD 50,100	BD 5,010
MB 10	Penthouse	5th	300 sqm	BD 501,000	BD 50,100	BD 5,010

*Monthly equals 90% of the ASK price over 90 months — approximately 1% of the total.*

03

---

THE RESIDENCES



THE FLOOR PLATES

The lower plates — duplex gardens beside entry residences.



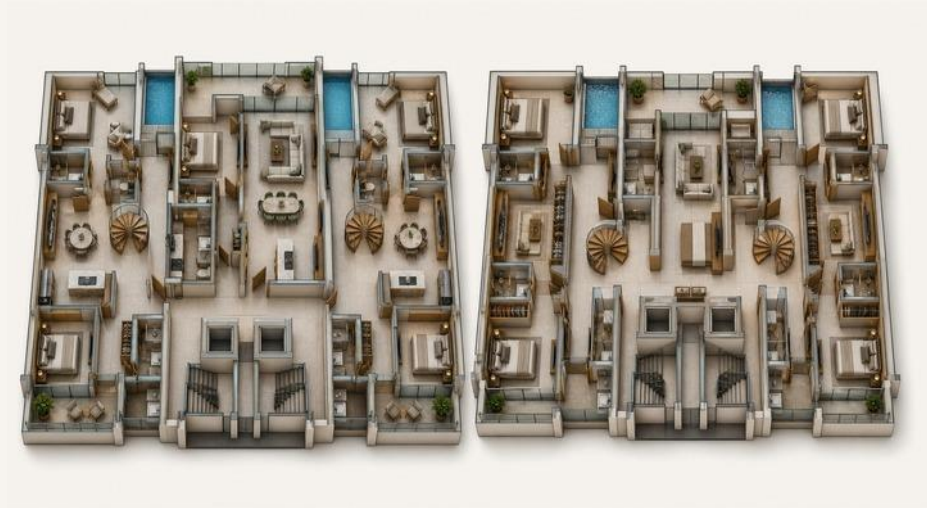
FIRST-FLOOR PLATE



SECOND-FLOOR PLATE

THE UPPER PLATES

Upper floors carry the pools, terraces and the sea.



THIRD & FOURTH-FLOOR DUPLEX PLATES



PENTHOUSE LEVEL

THE RESIDENCES — I



# MB1

DUPLEX POOL

SIZE

407 sqm

ASK PRICE

BD 590,150

MONTHLY

BD 5,902



# MB2

2BR APARTMENT

SIZE

185 sqm

ASK PRICE

BD 272,875

MONTHLY

BD 2,729



## MB3

DUPLEX POOL

SIZE

407 sqm

ASK PRICE

BD 590,150

MONTHLY

BD 5,902



## MB4

2BR APARTMENT

SIZE

185 sqm

ASK PRICE

BD 272,875

MONTHLY

BD 2,729



## MB5

2BR APARTMENT

SIZE

185 sqm

ASK PRICE

BD 272,875

MONTHLY

BD 2,729



## MB6

DUPLEX POOL

SIZE

415 sqm

ASK PRICE

BD 601,750

MONTHLY

BD 6,018



## MB7

PREMIUM 2BR

SIZE

185 sqm

ASK PRICE

BD 276,575

MONTHLY

BD 2,766



## MB8

DUPLEX POOL

SIZE

415 sqm

ASK PRICE

BD 601,750

MONTHLY

BD 6,018



## MB9

PENTHOUSE

SIZE

300 sqm

ASK PRICE

BD 501,000

MONTHLY

BD 5,010



## MB10

PENTHOUSE

SIZE

300 sqm

ASK PRICE

BD 501,000

MONTHLY

BD 5,010

ORIGINAL FLOOR PLANS

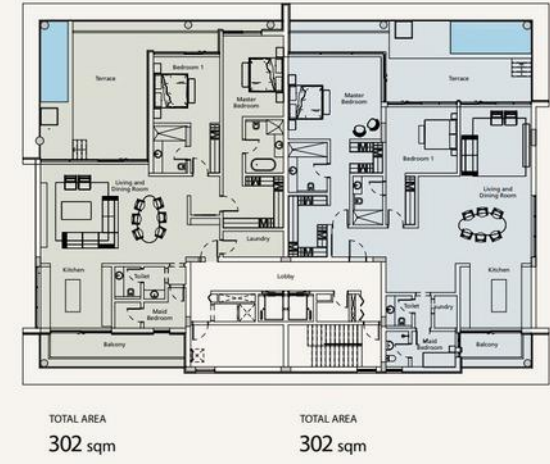
The architect's drawings, retained for buyer confidence.



MB1 / MB3 — POOL DUPLEX



MB6 / MB8 — LARGE POOL DUPLEX



MB9 / MB10 — PENTHOUSE

3D visuals in this deck are sales illustrations derived from these supplied plans — not construction drawings.

# *The Signature*

---

TEN RESIDENCES · REEF ISLAND · PRICES IN BAHRAINI DINAR

PRESENTED BY ASK